

## Wrapper general features

- Compatible with any Abaqus version
- Utilizes Abaqus Python Scripting API
- Abaqus CAE GUI extension
- Abaqus Standard and Explicit Solver

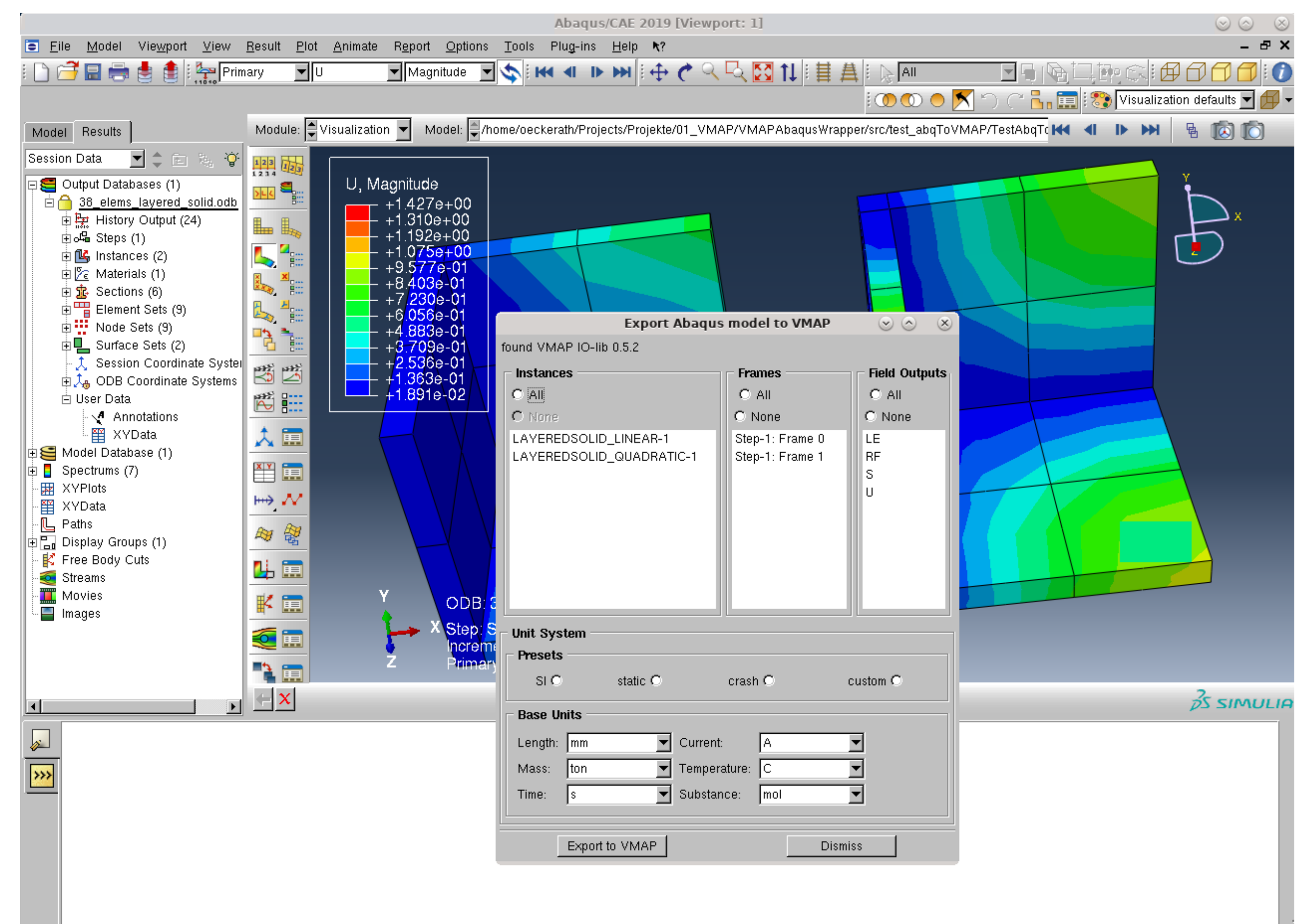
## Export to VMAP features

- Multiple part instances
- Node, element and surface sets
- Unit system
- 450 Abaqus element types supported
  - Beams
  - Shell
  - Solid
  - Composite Shell
  - Solid Shell
- Nodal, element, integration and section point results for
  - SCALAR
  - VECTOR
  - TENSOR\_3D\_FULL/PLANAR
  - TENSOR\_2D\_PLANAR/SURFACE
- Multi state, multi frame result export

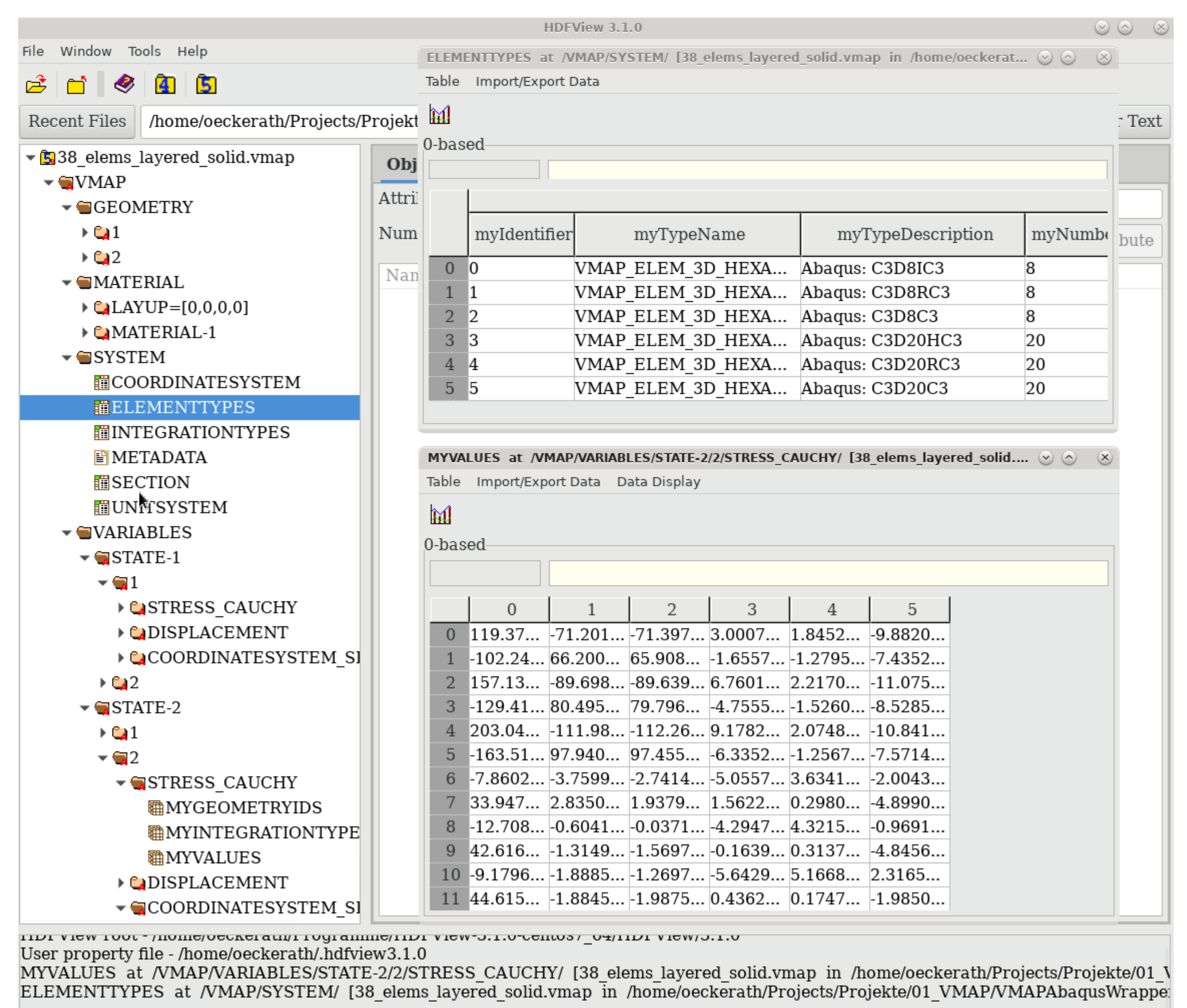
## VMAP to Abaqus features

- Translation of geometry
  - Abaqus Input Deck
  - Abaqus ODB
- Result transfer variables
  - THICKNESS
  - STRESS\_CAUCHY
  - Any nodal result variable

## Wrapper GUI in Abaqus CAE



## VMAP File in HDFView



Developed in cooperation by



Join VMAP Standards Community

