

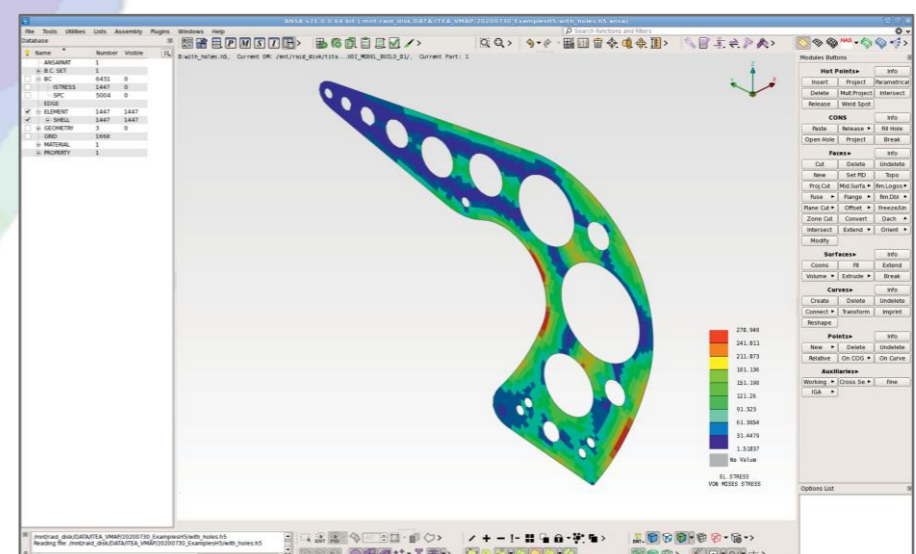
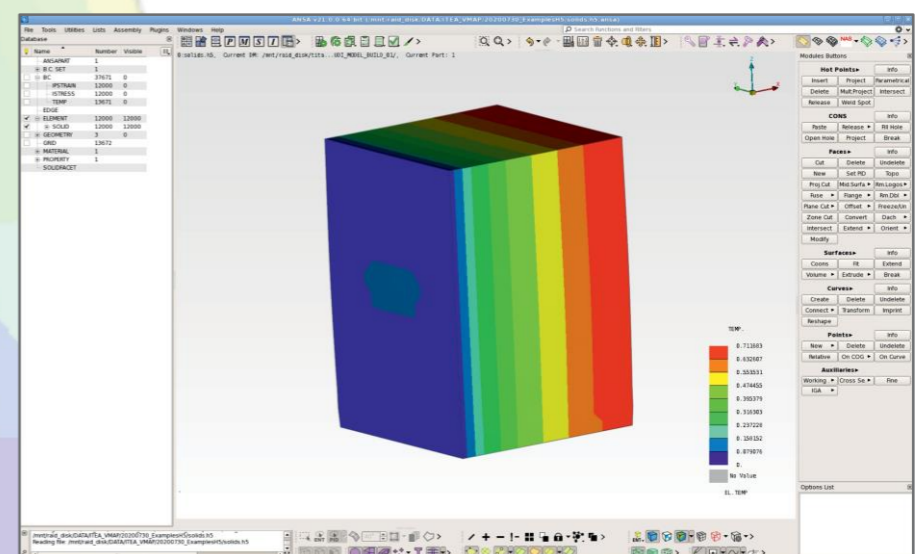
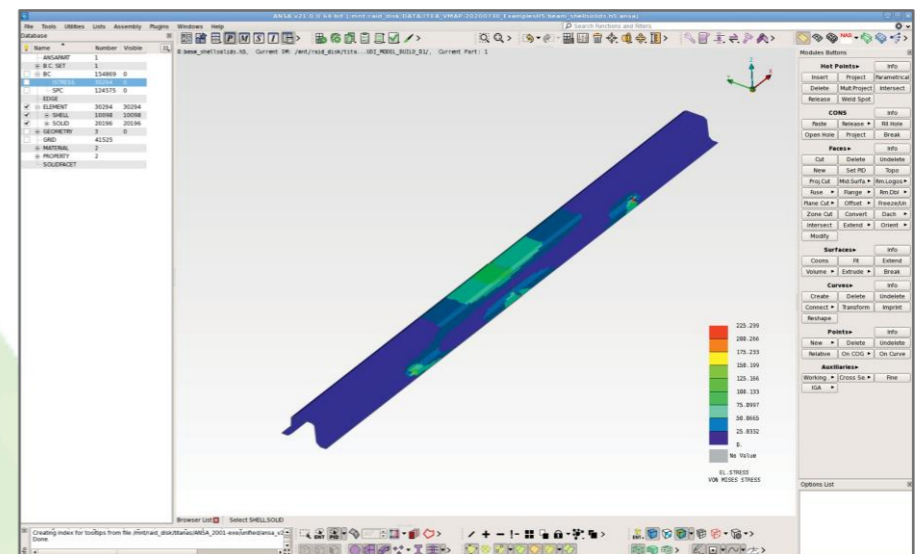
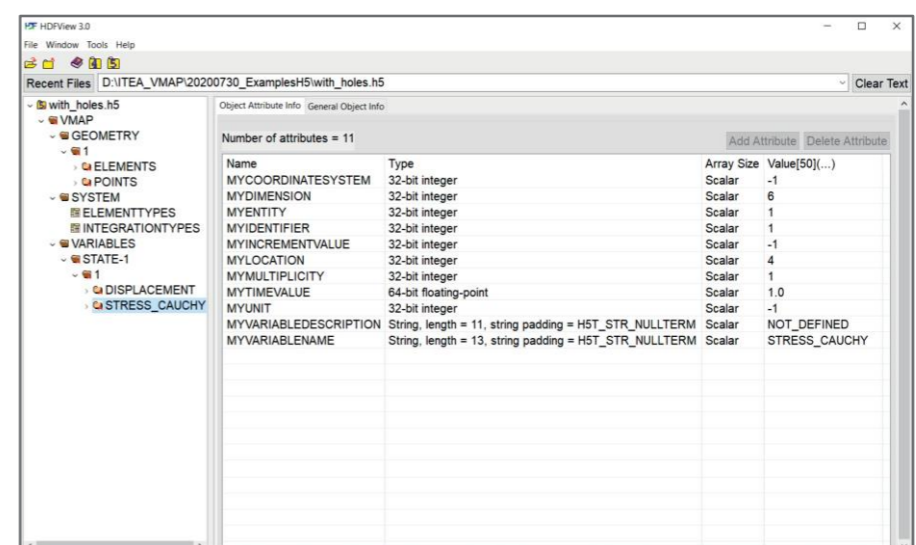


the VMAP gate to simulation processes

- SHELL and SOLID elements support.
- STRESS, EQUIVALENT PLASTIC STRAIN, THICKNESS, TEMPERATURE and DISPLACEMENT results support.
- NASTRAN keywords generation.
- Conversion of EPILYSIS .h5 results file to VMAP .h5 results file.

Why ANSA

- Fast and high quality shell and volume meshing of intricate geometries.
- Batch meshing with controllable and predictable results.
- High level of pre-processing automation and customization.
- Model variations comparison and handling.
- Morphing capabilities.
- On-the-fly interoperability of the models built for different solvers.
- High level of interoperability with other software, including optimizers.
- Responsiveness and quality of software development and after-sales support.

Name	Type	Array Size	Value(s)
MYCOORDINATESYSTEM	32-bit integer	Scalar	-1
MYDIMENSION	32-bit integer	Scalar	6
MYIDENTITY	32-bit integer	Scalar	1
MYINTEGRATIONTYPES	32-bit integer	Scalar	1
MYINCREMENTVALUE	32-bit integer	Scalar	-1
MYLOCATION	32-bit integer	Scalar	4
MYMULTIPLICITY	32-bit integer	Scalar	1
MYTIMEVALUE	64-bit floating-point	Scalar	1.0
MYUNIT	32-bit integer	Scalar	-1
MYVARIABLEDESCRIPTION	String, length = 11, string padding = HST_STR_NULLTERM	Scalar	NOT_DEFINED
MYVARIABLENAME	String, length = 13, string padding = HST_STR_NULLTERM	Scalar	STRESS_CAUCHY

Join VMAP Standards Community



VMAP
Standards Community